

MONTHLY MEMBERSHIP PROGRESS REPORT

LOCATION NEW YORK

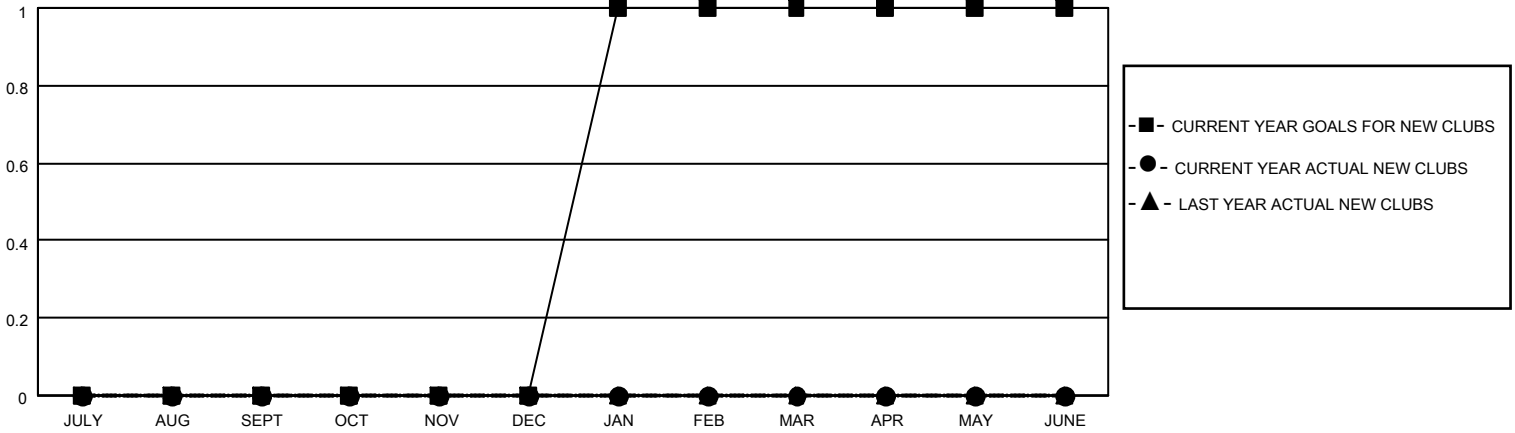
District 20 R2

Results as of: 4/30/2022

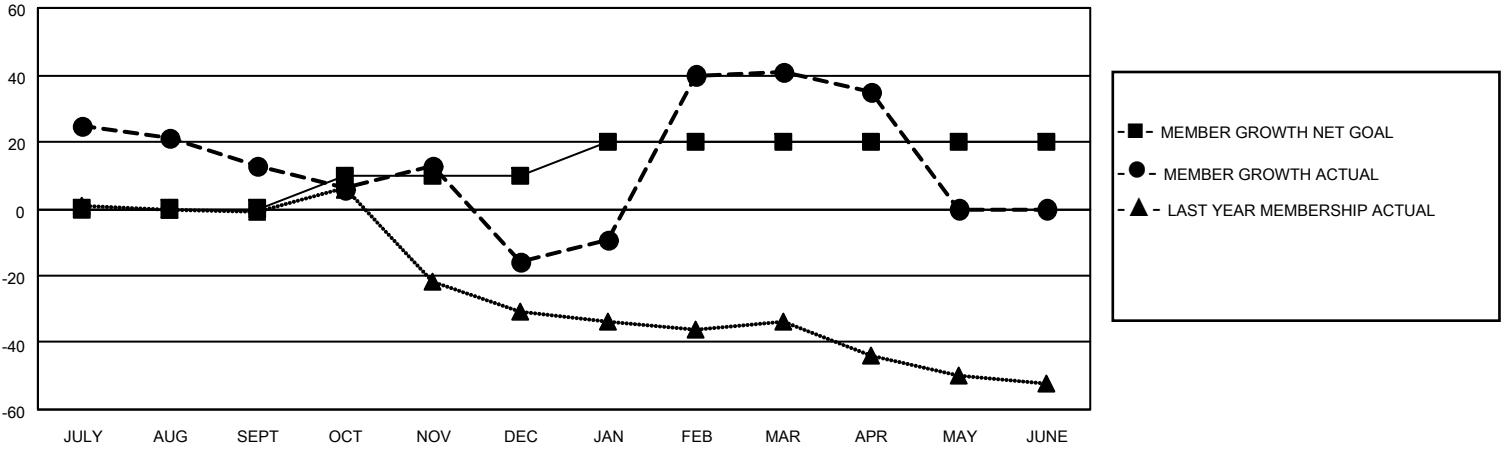
Clubs			
RESULTS FOR 2021-2022			
QUARTER	NEW CLUB GOAL	NEW CLUBS	DROPPED CLUBS
JULY/AUG/SEPT	0	0	1
OCT/NOV/DEC	0	0	3
JAN/FEB/MAR	1	0	0
APR/MAY/JUNE	0	0	0

Members			
RESULTS FOR 2021-2022			
QUARTER	MEMBER GROWTH NET GOAL	MEMBER GROWTH ACTUAL	DROPPED MEMBERS ACTUAL (including transfers)
JULY/AUG/SEPT	0	45	31
OCT/NOV/DEC	10	52	78
JAN/FEB/MAR	10	72	11
APR/MAY/JUNE	0	6	11

GOALS AND ACTUAL NEW CLUBS CUMULATIVE



GOALS AND ACTUAL MEMBERS CUMULATIVE



DROPPED CLUBS: 4

15 CLUBS OF 41 ADDED 1 OR MORE NEW MEMBERS

GENDER DISTRIBUTION

DROPPED MEMBERS

DECEASED	4
CLUB CANCELLED	58
OTHER	69
TOTAL	131

[CLICK HERE FOR CUMULATIVE MEMBERSHIP DATA](#)

MALE	488 (47.38%)
FEMALE	541 (52.52%)
NON BINARY	0 (0.00%)
PREFER NOT TO ANSWER	1 (0.10%)

TOTAL FAMILY UNIT MEMBERS 266

FAMILY MEMBERS PAYING HALF DUES 147